



The Embroiderers' Guild  
of America, Inc.

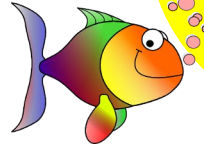
# Mid - Atlantic Region Newsletter



Volume 35 Issue 3  
December 2015

## CAMP WANNASTITCH

Mid-Atlantic Region Stitchers' Retreat  
Friday thru Monday, January 15–18, 2016  
Ocean City, Maryland



**LAST DATE for  
SIGN-UP  
DECEMBER 15, 2015**

The first time we held Camp Wannastitch at the Clarion only a handful of people attended. Look at us now, the secret is out! This fabulous retreat has grown by leaps and bounds and this year we'll have over **164** people! That is just amazing!

Each year I arrive in Ocean City with such excitement in anticipation of seeing so many "old" friends and the beauty of meeting new ones too, and I've come to realize the "old" friends group has grown and grown. The Mid-Atlantic Region is full of interesting and talented people and this retreat affords us the opportunity to get to know our fellow EGA members better. The atmosphere encourages us to walk around and see all the beautiful pieces that are currently in work.

If you feel a need to take a break from stitching, there is always shopping. Having two great stitching shops, Salty Yarns and Sea Needles, close by makes it so easy to stock up on all the essentials. OK, we all know that everything we buy is considered essential, right?

The registration fee is only \$10. Please don't hesitate because the remaining seats are limited.

Don't forget, even though the retreat officially runs from January 15 – 18, **the stitching room will be available for our use starting at 4pm Thursday, January 14<sup>th</sup>!!** I'll be there because I can't wait to see everyone!

**This issue of the MARN is available to all but in full color  
(but with no phone/address contacts) on the MAR website.**

**If you would like access to the December 2015 Issue with  
addresses and contact information,  
use the MAR username and password!**

**(Username and password is  
printed in each issue—  
check your previous saved MARN)**

**This issue of the MARN is available to all but in full color (but with no phone/address contacts) on the MAR website.**

**If you would like access to the December 2015 Issue with addresses and contact information, use the MAR username and password!**

**(Username and password is printed in each issue—  
check your previous saved MARN)**

## Orts of All Sorts Bag

**Personalized for Camp Wannastitch**

**Price: \$20 per bag**

**Size: 6" H x 5.5" L x 5.5" D**

**Perfect for Stitching Supplies, Orts, Snacks, etc.**

**Option 1—Flower Bag**



**Option 2—Polka Dot Bag**





## Region Director's Message

Hello MAR members!

What a whirlwind fall it was! We had such a lovely weekend in Wilmington, Delaware in October. The weather was frightful, but **Amee Sweet McNamara** was delightful. We all enjoyed learning this new Soutache beading technique, and I think we all came away with a finished pin. No UFOs here! That in itself is quite a statement.

Well, as you read this, Early Registration for **Star Spangled Seminar 2016** is closed, and you will be anxiously awaiting the email with your class confirmation. I hope you all registered! It will be such a great time for the Region as a whole. I also hope that when the call goes out for volunteers, you will be the first in line. It takes a village to run a successful seminar. Please be a Doo-Bee!

I came home recently from a week of meetings and then classes at the national Seminar 2015 in San Antonio, and watched all week as volunteers manned the registration tables, the banquet set ups, the boutique, and the education exhibits. They were vital to the event, and each one only had to do a short stint to make a big difference.

Now, is there a hidden **Mary Corbet** in you? But, like, you know, without that entire full-time commitment thing? You are in luck! The National EGA website is planning a new feature; a member-driven Blog! They are looking for writers to volunteer to contribute a small entry, just once a month or so, about whatever your stitching heart desires. Been to a cool museum? Attended a great lecture? Saw a beautiful piece on Pinterest? Have a grievance about needlework to air? Contact [marketing@egausa.org](mailto:marketing@egausa.org) and let them know you'd love to help.

As this holiday season approaches, I want to extend my best wishes to each of you, and my thanks for being such a great supporter of the guild. You are truly a gift. Remember, WE are the EGA!

In Stitches,  
Patty

**Mid Atlantic Region Spring Meeting Weekend**  
**March 18 & 19, 2016**  
**Mount Laurel, New Jersey—Hosted by Colonial West Jersey**



**THaP = Take Home a Project**  
**March 19, 2016—9:00am—11:30am**

**Romanian Point Lace Holiday Wreath**

THaP 2016 is a Romanian Point Lace Holiday Wreath. This class will be taught by on March 19, 2016 at the spring region meeting.

**The main purpose of Take Home a Program (THaP) is to provide programs and projects for chapters.** If a chapter is interested in the program, they will send a member to take the class who will then return and present the program to the chapter at a future date. It also provides an opportunity for new teachers to teach beyond their own chapter.

The project is a small wreath using 3 or 4 needle lace stitches of your choice with bead embellishment. Cording, thread, and beads will be provided in the kit. The instructions will include directions for the crochet cording used in Romanian Point Lace. (Crocheting the cording would take too much class time so it will be provided.) All levels may take this class.

The kit fee is \$10 and it is paid by the chapter. The **deadline** for registration is **February 1, 2016**. One person per chapter may take this class and then teach it to their chapter at a future date.

**If the class is not filled by the sign up deadline, other MAR members (which includes new members) may sign up by February 15, 2016.**

**Kit includes:** Instructions, picture, cording, muslin backing fabric, threads, beads, needles (2 different sizes) & doodle project.

**Student brings:** Scissors, thimble (if used), light & magnifier are optional.

**Lunch & Lecture—March 19, 2016**  
**12 noon—1:30pm**

**1830-1930 A Century of Fabrics Find Their Way into Quilts**

After the morning THaP class, you will be treated to a lecture. The lecturer will speak on her finds and will display her private collection of study quilts. She will focus on fabrics, design and techniques used on antique quilts. Most of her acquisitions were gathered from our own Mid-Atlantic Region. Her treasures are sure to fascinate and amaze those in attendance.



## Mid Atlantic Region Spring Meeting Weekend March 18 & 19, 2016 Mount Laurel, New Jersey—Hosted by Colonial West Jersey

### Weekend Schedule of Events

#### Friday: March 18, 2016

1:00pm— Seminar 2016 Committee Meeting

7:00pm— MAR Board Meeting

#### Saturday: March 19, 2016

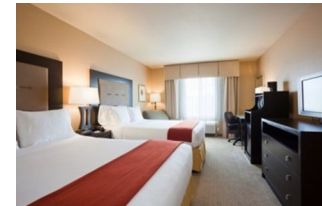
9:00am—Take Home a Program Class

12:00pm—1:30pm: Lecture & Lunch

2:00pm—Mid-Atlantic Region Meeting

### Holiday Inn Express & Suites Mount Laurel, New Jersey 6000 Crawford Place, New Jersey

**Hotel amenities:** Continental Buffet Breakfast included  
Cable / Satellite TV, Work Desk w/ Lamp, Hairdryer, Coffee Maker,  
Tea Maker, Microwave Oven, Mini Refrigerator; Wireless Internet  
available in Standard Rooms, Business Center, Public Areas



**For your shopping and dining pleasure, the Colonial West Jersey Chapter will provide a complete list of restaurants and other shops. This information will be with your check in packet.**



**Nimble Needle  
Rittenhouse Needlepoint  
Bead & Glass Boutique  
Jubili Beads & Yarns**



**Wegmans  
Trader Joe's  
Whole Foods  
& many restaurants**



## Boxed Lunch will be available for the MAR Region meeting and THAP class



### March 19, 2016

We have arranged to have a **Panera** boxed lunch option for all participants.

Please look at the menu below, and make your choice for March 19, 2016. Then write a check.

***Students are also permitted to bring their own brown bag lunch to eat.***

The Colonial West Jersey Chapter is providing unsweetened iced tea, and lemonade.

You are welcome to bring your own beverages.

#### **Boxed Lunch Options:**



***All boxed lunches will be a sandwich, pickle, chips, and a cookie, for \$11.***

**Sierra Turkey:** Smoked Turkey breast, field greens, red onions and chipotle mayo on asiago cheese focaccia.

**Mediterranean Veggie:** Zesty sweet Peppadew piquant peppers, feta, cucumbers, lettuce, vine-ripened tomatoes, red onions, and cilantro jalapeno hummus on Tomato Basil.

**Turkey Breast:** Smoked turkey breast, lettuce, vine-ripened tomatoes, and red onions with salt and pepper on Country bread.

**Tuna Salad:** Special recipe tuna salad, lettuce, vine-ripened tomatoes and red onions with salt and pepper on Whole Grain.

**Ham and Swiss:** Smoked, lean ham, Swiss, lettuce, vine-ripened tomatoes and red onions with salt and pepper on Rye.

**This issue of the MARN is available to all but in full color  
(but with no phone/address contacts) on the MAR website.**

**If you would like access to the December 2015 Issue with  
addresses and contact information,  
use the MAR username and password!**

**(Username and password is printed in each issue—  
check your previous saved MARN)**





### Treasurer's Report

Hello Chapter Treasurers,

Again this coming year, MAR will suspend region dues for the year of 2016 from members. No one will pay Mid-Atlantic Region dues in 2016!

### Secretary's Report

As the days left in 2015 wind down, and the New Year approaches, some chapters will have officer changes. Just a reminder to send updates to the secretary, Regional Director and to National. The form is on our website if you do not have a paper copy.

Also please send any officers information changes to me as soon as known so I can update the data base. It is so much easier when emails go to contacts on the first send.

As I look forward to winter and the holidays that are a part of this time of the year, I want to wish all members joy filled days.

**This issue of the MARN is available to all but in full color (but with no phone/address contacts) on the MAR website.**

**If you would like access to the December 2015 Issue with addresses and contact information, use the MAR username and password!**

**(Username and password is printed in each issue— check your previous saved MARN)**



Please note that **EGA is discontinuing the use of this address:**

**1355 Bardstown Road Suite 157.**

This mailbox will be closed within the next year. We are in the process of updating forms and manuals.

The mailbox will remain in EGA's name and checked daily for several more months. Going forward, mail should be **sent** to Headquarters' physical address:

**1205 East Washington Street  
Suite 117  
Louisville, KY 40206.**

### Group Correspondence Courses



The Spring 2016 GCC, selected by the MAR Board of Directors, will be ***White Iris***, designed and taught by Mona Hill.

In the garden, gorgeous irises burst into bloom amid smaller flowers heralding the warm days of early summer. *White Iris* is stitched using white or cream Pearl Cotton on matching 32-count Belfast linen. The mat chosen for behind and around the piece adds the punch of color.

Combining stunning June flowers, *White Iris* is a sampler of eleven pulled thread patterns worked inside surface embroidery of flowers petal edges. The surface embroidery emphasizes shaping the buttonhole stitch and the chain stitch to form leaves and petal edges. Chain stitch, outline stitch and satin stitch variations are used for flower stems. Some knowledge of compensation is essential in working the pulled thread patterns.

This beautiful composition, done in surface embroidery enclosing areas filled with pulled thread patterns, has a spectacular lace-like quality.

**Size:** 9" x 9" design on 15"x15" ground fabric

**Fabric:** 32-count Belfast linen

**Threads:** Pearl cotton #8 and #12

**Colors:** White or cream

**Skill Level:** Intermediate

**Prerequisites:** Knowledge of compensation and the ability to work stitches from diagrams

**Time:** 5 meetings plus preliminary and wrap-up meetings (approx. 6 months)

**Fee:** \$175 per group

**Text:** \$48 per student plus \$5 for postage

**Supplies:** \$19.00 (approximate)



The texts for the Fall 2015 GCC, ***Star-Spangled Puzzle Ball***, designed and taught by Denise Harrington Pratt, are currently en route to the registrants. This course will run from November 15, 2015 to May 15, 2016. The class filled up quickly for this popular offering.



The Spring 2015 GCC, ***Bargello Challenge***, designed and taught by Gail Stafford, has been completed and evaluated. An amazing potpourri of beautiful and imaginative designs were stitched!





## Crewel WOOL SALE

**Bah, bah black sheep...  
Have you any wool?  
No sir, no sir, no more wool!!!**



The MAR crewel wool sale is over. MAR was given skeins of crewel wool from a closed needlework shop. We have been selling it for 2 years. In addition chapters had the opportunity to receive free of charge the wool needed to complete the Petite Project, "Colonial American Embroidery." Five chapters took advantage of that offer. MAR made \$291 from this sale.



## MAR BANNER!

The MAR Banner made an appearance at the October 3, 2015 MAR Meeting. There are only 13 more squares to be filled. It is currently in the possession of the Brandywine Chapter. Washington D.C. Chapter will have it next. It should be at Camp Wannastitch for everyone to see.

Our region director has graciously offered to mount it.

We are planning on unveiling it at the MAR sponsored National Seminar in 2016 in Alexandria, VA.

It is permissible for a chapter or individual to honor a departed member. In the recording book sign: "In memory of \_\_\_".

## MAR History—Request

I have received a few more chapter histories, but I still need a history from most chapters. You know who you are. Why not make it a New Year's resolution to put a history together for your chapter!

My resolution is to have chapter packets of material that does belong with MAR History for individual chapters.



**Star Spangled Seminar 2016!**  
**November 2-6, 2016 in Alexandria, VA**

## Seminar 2016 Exhibit Report

We were a **SMASHING SUCCESS** with our Preview Exhibit in San Antonio! Many people came back time after time because they wanted too many first choices.

Loved the maps passed out at dinner and the welcome letter with all the information from us...a few said they are getting their absentee ballot ready and have wanted to see that area forever...so planning for it. Our registration went live on EGA's website on November 1st. Be sure to go to [www.egausa.org](http://www.egausa.org) and click on our logo. Then go to "classes" to view the pieces.



### MAR PRiDe SILENT AUCTION

MAR PRiDe was created by former MAR Region Directors to offer funds for individuals to study topics of personal interest in their own. In the past funds have been used participate in an ICC, travel to IECs and seminars, and to study ethnic and historic stitching. The funds to keep this activity going are to be raised by past Region Directors.

To raise funds this year, the past Region Directors agreed to offer items at a silent auction. The auction was held at the October 3, 2015 Region Meeting and earned \$689.00.

### MAR PRiDe SCHOLARSHIP

The 2016 MAR PRiDe scholarship will be named for Pam Kopp.

The application **deadline is March 1, 2016.**

Applications will be reviewed by the selection committee consisting of three Past Region Directors (i.e., MAR **PRiDe**) and the recipients announced in April 2016.

Recipients are required to complete their experience and write a report to the MAR PRiDe Committee by March 2018; that is, two years from the time this year's recipients are announced.

### Joan Masterson Memorial Chapter Education Fund Report

This year the Fund has received donations from Edith Feisner and the sale of the wool which was donated to the region. Thank you for the continuing support of this educational fund.

The committee received three grant applications for November 2015 deadline and grants are awarded as follows:

- a grant for \$175 to Jersey Cape Atlantic Chapter to cover the teaching fee for the EGA Group Correspondence Course, *Meadow Medley*, scheduled for February 3, 2016.
- a grant for \$375 to Lehigh Valley Chapter towards the teaching fee for a workshop with Orna Willis on April 9 -10, 2016. The project will be "Reflections of Joy".
- a grant for \$375 to the Williamsburg Rose and Thistle Chapter towards the teaching fee for a workshop with Catherine Jordan on April 12-13, 2016 has been approved. The project will be "Mirror to my Art Forest Compact".

These events will provide MAR chapters with educational opportunities for their members and members of the region.

**This issue of the MARN is available to all but in full color (but with no phone/address contacts) on the MAR website.**

**If you would like access to the December 2015 Issue with addresses and contact information, use the MAR username and password!**

**(Username and password is printed in each issue— check your previous saved MARN)**



## SMART DAY 2017



The region will not have a SMART Day in the fall of 2016, as we hope many of you will take advantage of the chance to go to the national seminar right here in the region. However we need to know what our members would like to do for 2017.

We'll discuss this at the March meeting and it is much better if we have examples to show for those not familiar with a specific person or technique.



## REACH FOR THE STARS CHALLENGE

MAR is getting a jump on the "Reach for the Stars" Challenge that will be announced for all Seminar 2016 participants. Participants in this MAR challenge do not need to be registered for Seminar '16.

Any technique, any size, any material can be used for individual stitchers to create a star themed embroidery piece. It can be original or an adaptation.

Entries must be brought to the March 19, 2016 MAR meeting and need to be taken home at that time.

Stitchers attending the March 19, 2016 meeting will vote for their favorite entry and prizes will be awarded.

We are using this opportunity to support the Alzheimer Association. Any donation will be gladly accepted.

## Do you want to become another "Mary Corbet"? Here's How!! EGA is Calling All Writers



Are you interested in sharing your love of embroidery in a different way? To help cover the country and share all the current embroidery news, EGA is currently seeking members to assist in writing for the EGA blog. Members want to know about what's going on in Chapters and Regions as well as about museum exhibits.

You can commit to as much or as little as you want. Did you visit a great exhibit that you want to share? Great, We'll take one article! Want to be a 'roving reporter' and share items on a more regular basis? Great! We'd love to have you.

All submissions can be edited for clarity and length.



## Lehigh Valley Chapter's CARD FRONT COLLECTION PROJECT

The Lehigh Valley Chapter continues to collect Greeting Card Fronts for a charity that repurposed them into fund raising items. **No Hallmark, American Greetings, Disney, or fronts with messages on the back are acceptable.**



## Susquehanna Chapter's Outreach Project for Domestic Violence A Redwork Quilt

The Susquehanna Chapter has been involved with Domestic Violence Cumberland/Perry County Chapter since 1995.

To support Domestic Violence Susquehanna members have donated many needlework pieces. One of our projects was to "Adopt a Towel". Each member would then embroider her towel and fill it with toiletries collected by the members. These sets would be given to a domestic abuse victim when they arrived at the shelter. The towel sets were also used as gifts that the children could give their mom for a holiday, such as Mother's Day and Birthdays. Included with the towels was a note saying "Our thoughts are with you on this, the first day of your new life".

Other projects included needlework pieces that we had framed and Christmas ornaments.

This year our president came up with the idea of stitching the redwork squares which she had found in her stash. The idea quickly turned into a quilt project which would be donated for the Domestic Violence Holiday Auction held in November!

Besides providing the squares, our president donated the fabric needed to finish the quilt. She also arranged a Quilting Bee day to complete the quilt.



## Have you checked out the YES! Youth Embroiderers Show on the EGA website?

If not, **You** are missing an incredible display of our future up and coming stitchers and designers of embroidery.

Simply go to the EGA web site and click on the **Youth** tab. You will be absolutely amazed at how talented and creative the youth are.



**If I stitch fast enough, does it count as aerobic exercise? ~Author Unknown**





## International Embroidery Conference Report

I was feeling lucky one day in late December last year, so I sent in a coupon to win one of two scholarships offered by the Mid-Atlantic Region of EGA to attend the Sixth International Embroidery Conference in Williamsburg, Virginia.

I was feeling wretched one day in March (doctor stuff), when I answered the phone to find our Region Director on the line. Her call made me feel a lot better: I had won one of the scholarships!

May 14 found me on the road to Williamsburg, where I spent three days absorbing a world of embroidery, as reflected in the conference theme, "Threads Through Time." It was a time to listen and learn, not to stitch.

The speakers were highly experienced and highly knowledgeable in a range of embroidery and fiber traditions, including East Asian Silk Embroidery, the beautiful woven Rebozos of Mexico, the samplers of Williamsburg, traditional lace-making techniques of France, embroidery as an art form, and Ecclesiastical embroidery. The speakers represented such well-known U.S. institutions as the Metropolitan Museum of Art, The Textile Museum, and the Colonial Williamsburg Foundation, as well as an embroidery museum and textile study center housed in Korea, the Chung Young Yang Embroidery Museum. Other speakers pursue their textile research and artistry in the university context, including the University of Texas at San Antonio and Elon University.

We all enjoyed a special tour of the Williamsburg Collection at the Dewitt Wallace Museum of Decorative Arts, which cries out for a return visit.

The conference also gave me an opportunity to meet many of our National and Regional officers and staff, as well as spend some very enjoyable time with some of our own chapter members as well as those from other chapters.

My advice to all of you: when next you see a coupon for a scholarship offered by MAR, jump on the chance to win. You may be as lucky as I am.



**This issue of the MARN is available to all but in full color (but with no phone/address contacts) on the MAR website.**

**If you would like access to the December 2015 Issue with addresses and contact information, use the MAR username and password!**

**(Username and password is printed in each issue—check your previous saved MARN)**

All EGA chapters are granted permission to reprint original material in this newsletter with proper credit and the Mid-Atlantic Region Newsletter. Any copyrighted material will be indicted. Written permission to reprint copyrighted material must be obtained from and granted by the author or artist.

“Our mission is to stimulate appreciation for and celebrate the heritage of embroidery by advancing the highest standards of excellence in its practice through education, exhibition, preservation, collection and research”

Please feel free to use this statement wherever you feel is appropriate, especially in your chapter newsletters



#### ***About MARN***

Marn (Mid-Atlantic Region Newsletter) is now published three times a year (April, August and December).

Subscriptions for mailed copies for one year are only **\$6**. The address label on a paid subscriber's copy carries the expiration date. If you would like to receive the MARN, send your check to:

Please make your check payable to **MAR-EGA**. Theresa will inform the editor of your subscription or renewal.

#### **Submitting Newsletter information**

Information can be submitted for the newsletter in two ways. You may E-mail the MARN editor or send it by mail. Her information is listed in this newsletter. Please include your name, chapter and phone number.

Unless otherwise stated, the deadline for article submission is one month before publication. The exact date will be announced.

#### **Online MARN**

This issue of the MARN is available in full color for FREE on the MAR website. The newsletter is on a password-protected members-only page. If you would like access to the page, use the username and password listed above. Email the web coordinator if you cannot access the members only area. (You do not need to be a member of the Mid-Atlantic Region to access the online **MARN**.) There is also a scrubbed version (with no personal information) available without a password on the same site.