



The Embroiderers' Guild  
of America, Inc.

# Mid - Atlantic Region Newsletter



Volume 35 Issue 2  
August 2015

**Registration Deadline  
Extended to  
August 22, 2015**

**SMART DAY! October 3, 2015  
with  
Amee Sweet McNamara**  
SMART DAY 2015 is hosted by the Brandywine Chapter

**Royal Crest Pin/Pendant Soutache and Bead Embroidery  
Taught by Amee Sweet McNamara**

**A gift to you from MAR. MAR pays all costs except the kit fee.**

The Royal Crest Pin/Pendant is great for a person new to Soutache. This is a wonderful Beginner Project designed to teach the basics of Soutache & Bead Embroidery. Students will master the "Harp Shape" element, adding a layered "Splash" and a dangle. The finished piece can be worn as a pin, or, with the brooch-adaptor included in the kit, as a pendant.

The price for the kit will be **\$45.00** and students can sign up for any of **5 colorways**:

**"Tree House"** (orange/green), **"Lullaby"** (blue, lavender), **"Finger Paint"** (primary colors), **"Sandcastle"** (warm neutrals) or **"Snow Angel"** (aqua/white). Glue, thread and needles are provided with kit.

Students should bring a surface to work on (such as a bead tray or bead mat) and good scissors. Completing the dangle on the bottom of the pendant will require use of two pairs of flat-nose pliers, flush-cutters and looping or rosary pliers. The teacher will have these tools in class but - in the event that students need to finish their project at home - they should own a set of these basic beading tools.



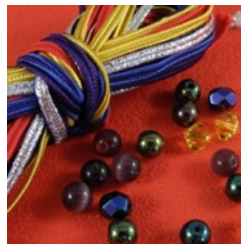
**SMART DAY Schedule is located at top of page 7.**



**Tree House  
Orange/Green**



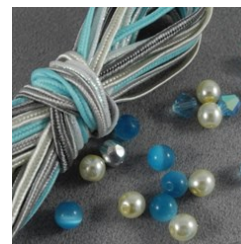
**Lullaby  
Blue/Lavender**



**Finger Paint  
Primary Colors**



**Sand Castle  
Warm Neutrals**



**Snow Angel  
Aqua/White**

**Deadline  
for  
SMART Day  
Registration:  
August 22, 2015  
SIGN UP NOW!**

**Double Tree Hilton**  
4727 Concord Pike  
Wilmington, DE 19803  
**Phone:** (302) 478-6000

**Room Rate:** \$115.00 + tax per night

**Special Room Rate good only  
until September 2, 2015**

**Mention:** "Mid-Atlantic Region, EGA"

**You may use this link to make your room reservation.**

<http://doubletree.hilton.com/en/dt/groups/personalized/I/ILGCPDT-MAR-20151002/index.jhtml>





## Region Director's Message

Hello Stitchers!

Fall is coming. I say that with all the faith I can muster, as I am writing this when it is hot enough to steam broccoli outside!

But it is coming, and with it comes my favorite holiday of all; **SMART Day! *Stitching Mid-Atlantic Region Tutorial Day!*** This year Kathy Weigl has found a fantastic teacher of a new jewelry technique. What fun. Please run to your printer and get that coupon off RIGHT AWAY. The deadline is looming.

The **Brandywine Chapter** is hosting the meeting in Wilmington DE. It looks like a great weekend shaping up. We are having a silent auction of some amazing items donated by our Past (and Present) Region Directors to benefit the MAR PRIDE Scholarship fund.

By the way, Chapter Reps and Presidents, we have not had a volunteer chapter to host the **Spring 16 Region Meeting!** Talk to your members and board; this is a great way to spark excitement in your chapter about what is going on around the region, show off your area, and make some money! See the article in this issue with the details, and let me know if your chapter is interested. First come first chosen!

Update on the **Traveling Teacher Program** we outlined last March; we are planning a tour with **Tanja Berlin** of several spots in the Region as our way of using the Phillips Grant. Tanja has informed us that she is not teaching at all in 2016, so the tour will be planned for 2017. Stay tuned!

My job as Region Director has kept me hopping thru the first half of the year. There are electronic motions on important EGA Board issues every week, and of course, the best part of the job has been visiting chapters. In June, I got to go to a fun picnic party with the **Berks Chapter**, and I was asked to visit the **Jersey Cape Atlantic Chapter** to help them make the "**Catch a Wave**" bracelet from our website. I was also invited to come to the **Monticello** and **Lamplighters** Chapter's get-togethers, but I couldn't make it work with my schedule. So sad. But I hope that they will ask me again next year!

All by way of reminding you that I love to come and talk to chapter members at a gathering. It is a nice time to finally put some faces with the names I see in your newsletters, as well as a chance to hear what is going on at a personal level with your chapter. Keep me in mind!

I am going to San Antonio TX for Seminar at the end of October, and I will be bringing with me our ever-popular Region Donation to Fundraising; a \$300 Visa Gift card! This one will be displayed in YAHOO! style in a bright red cowboy hat donated by **Jean Schlect** from **MPS!**

And, last but not least, I have the exciting **Opportunity Drawing Tickets** for sale to win an all-expense paid trip to Seminar 2016 in Alexandria, VA! Time is running out; get your coupon in and dream a little dream with me.....

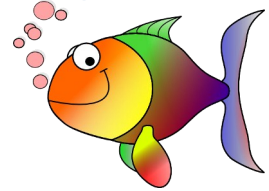
In Stitches, Patty



# CAMP WANNASTITCH



Mid-Atlantic Region Stitchers' Retreat  
Friday thru Monday, January 15–18, 2016  
Ocean City, Maryland



It's time to start planning for our next great stitching retreat, Camp Wannastitch 2016 at the Clarion Resort – Fontainebleau Hotel!

As we grow we've worked with the Clarion to provide more space so we can stretch out and stitch to our heart's content.

We have a ballroom reserved for stitching from Friday at noon through Monday at noon. Bring some goodies to share and be prepared to stitch from early morning until late at night - or whatever hours you like! Don't forget to take a break for shopping at Salty Yarns or Sea Needles. What more could a girl want?

**Please contact the Clarion directly to reserve your room : 1-800-638-2100 or 410-524-3535.** Ask for the **Camp Wannastitch Rate** when making your reservation. Double rooms are \$82 per night + tax. Rates are guaranteed until December 15, 2015. Guest rooms have a mini fridge, microwave and coffee pot.

**Deadline for registration is December 15, 2015.** Please respect that date as **late reservations won't be accepted.** Use the coupon at the end of this newsletter to reserve your spot – the registration is \$10. There will be no refunds of the registration fee.

**Early Bird Special: Stitching Room is available from 4 pm on Thursday!**



Clarion Resort  
Fontainebleau Hotel  
19199 Coastal Highway  
Ocean City, MD 21842

1-800-638-2100  
or 1-410-524-3535  
[www.clarionoc.com](http://www.clarionoc.com)

Don't wait,  
**RESERVE NOW!**  
Registration Form in  
Separate E-Mail  
Attachment.



## **Wanted !**

**A chapter to Host the **Spring** 2016 MAR Meeting!**

**Interested?**

**Any Chapter that hosts a Region Meeting weekend gets an honorarium of \$200, and reimbursement of any hospitality goodies up to \$250!**

**This is a lovely opportunity to have the whole Region come and enjoy your chapter and area. Hosting chapters are tasked with finding a hotel to consider for the meeting weekend; Hampton Inn, or similar smaller hotels with a meeting room available are our best options. The contract and details are worked out by the Region Board, so there is nothing difficult for the chapter to handle.**

**The hosting chapter is free to plan a hospitality event of their own choosing for Friday evening, or Saturday, depending on the weekend schedule. Your Region Rep is the best person to consult for information about what a Region Meeting weekend looks like!**

**Think about it, consult with your board, and let me know if you'd like to host this meeting next March! (Most likely March 18/19) Please feel free to ask any questions you may have.**





## MAR Executive Board

### Secretary's Report Submitted by Donna Pence

Hope that you have all had lots of time this summer to stitch on your favorite (or one with the closest deadline) work of art.

Just a reminder, with the start of the school year we sometimes find the need to make changes.

If any of your officers have changed please notify National, Patty Smith Gardner, and myself.

Thanks to all who have been sending this information in to me since the meeting in March.

### Finance Chair Report Submitted by Sara Brooks

The 2016 budget report can be viewed on pages 17-21. Voting on the budget will take place at the October meeting.

### Outreach Chair Submitted by Janet Bex

To all our chapter Outreach people, let me hear from you! I know you're busy with bookmarks and ornaments, so I'd love to tell the MAR board. Thanks and keep up the great work!

#### MAR Mailing Address

525 Baird Road  
Merion Station, Pa 19066

#### EGA Mailing Address

1355 Bardstown Road Suite 40204  
Louisville, KY 40204

### GCC Report Submitted by Barbara Fraize

The Fall 2015 offering will be ***Star Spangled Puzzle Ball***,

designed and taught by Denise Harrington Pratt. This class offers the stitcher the opportunity to discover the joy of taking counted thread embroidery into three dimensions by creating a "puzzle ball". The ball is constructed of pentagon and triangle components. The components use a variety of counted thread stitches. The stitches include kite eyelet, two-sided insertion stitch, Nova stitch, leviathan star stitch, and many more. Most of the stitches have a star-like appearance. The stitches create a variety of texture and pattern on the ball, providing a varied stitching experience. Once the components are completed, they are assembled into a beautifully stitched ball using clear instructions and diagrams.



The information-packed instructions are detailed and will guide the student through the entire process of creating the puzzle ball in a step-by-step manner.

**Project:** Three-dimensional ball

**Size:** Circumference of ball is approximately 13.5" (diameter: 4.5")

**Supplies:** Linen or even-weave fabric; silk and metallic or threads of choice.

**Color:** Two color options are offered, but students may choose their own color palette.

**Skill Level:** Intermediate

**Prerequisites:** Ability to stitch on linen

**Time:** Six months, six sessions

**Text:** \$40 plus \$5 for postage; 44 pages, including three color pages

Approximate Cost of Supplies (as of 2013): \$60 if silk and metallic are used, less if cotton floss is used.

### Registration Deadline is October 1, 2015

The Spring 2015 GCC, *Bargello Challenge*, by Gail Stafford, is indeed a challenge! Of the seven Oatlands students taking the course, each one has a different Bargello design; I can't wait to see what the rest of you out there come up with! Your pieces must be in my hands **no later than October 5** so that I can send them to Ms. Stafford for evaluation by October 10. It would be wise to put them in the mail by October 1st.

**NO need to cut up your newsletter! All coupons located in a separate coupon attachment!**

### MAR MEMBERSHIP

Submitted by Karen DeSantis,  
MAR Membership Chair

I hope all your membership initiatives helped to produce some new members for your chapter!

At this time, EGA 2015-16 Memberships should all be completed and chapter rosters e-mailed to Tonya Parks at National Headquarters. Her e-mail is [typarks@egausa.org](mailto:typarks@egausa.org). Tonya maintains the official roster for all regions of EGA.

A summer reminder to each chapter to search the major league and minor league teams in your area for their "Stitch 'n Pitch Night". It's another opportunity to stitch in public and possibly find some new members in addition to just enjoying a fun evening with your fellow stitchers.

For example: Here is the online advertisement from the Philadelphia Phillies. After the information, they include instructions for obtaining tickets. Most ball parks reserve a section so all the stitchers can sit together.

### Stitch n' Pitch Night

The Phillies in conjunction with the National Needle Arts Association, are inviting needlearts enthusiasts to the 9th annual Stitch n' Pitch night at Citizens Bank Park on Tuesday, August 25 when the Phillies host the New York Mets at 7:05 p.m..

Whether it's finishing an old project or starting a new one, fans are invited to knit, crochet, embroider, cross-stitch and needlepoint all while enjoying Phillies baseball.

Another idea for summer and fall is to sponsor a table at country fairs and festivals. Have a few members just sit and stitch and be sure to have your chapter information ready to share with on-lookers.

Continue your efforts in sharing your love of embroidery by showing others the beautiful work you do and inviting them to join your chapter.

Good Luck!!



Watch for the announcement of the spring 2016 **THaP** in the December newsletter. The class will be offered at the MAR meeting in March.  
Hope to see you there!



## SMART DAY Schedule October 2 - 3, 2015

### Friday—October 2

**3:00pm**—2016 National Seminar Committee Meeting  
**7:00pm**—Executive Board Meeting

### Saturday—October 3

**8:30am-4:00pm**—SMART DAY Class  
**7:00pm**—Region Board Meeting



## MAR BANNER! Submitted by AliceRae Kutish

We are coming down to the end of the stitching on the banner. You will be able to view it at the Oct. MAR meeting. The goal is to have it completed to our seminar in 2016!

If your chapter needs to mail the banner to the next chapter, remove it from the stretcher bars and pack everything into a tube. The Chapter Region Rep is responsible for the banner when it is in your area.

It is permissible for a chapter or individual to honor a departed member. In the recording book sign: "In memory of \_\_\_".

Again the weather has gotten the best of us and the hand-off of the banner from one chapter to the next has been delayed. Please see the revised schedule below.

Date	Chapter
July/August 2015	Bucks County
September/October 2015	Brandywine
November/December 2015	Washington, DC



**Hurry, Last  
Chance for  
Crewel Wool!!!**

### Submitted by AliceRae Kutish

MAR is offering a free program to chapters. Wool for Judy Jeroy's Petite Project "COLONIAL AMERICAN EMBROIDERY" will be supplied for each stitcher. Instructions for the Petite Project can be obtained from the Members Only section of the EGA website (egausa.org).

With the number of participants by Sept. 25, 2015. Wool in a variety of color selections will be brought to the Oct. 3 MAR meeting.

For stash enhancement, individuals or chapters can purchase a gallon ziplock bag for \$10.00. Each bag will contain approximately 50 skeins in a mix of colors. The bags will be available at the next MAR meeting. If you wish to order please contact:



**Deadline  
October 15, 2014**

It's time once again for the  
**DRAWING FOR AN ALL EXPENSE PAID\*TRIP TO -  
Star Spangled Seminar 2016!  
November 2-6, 2016 in Alexandria, VA**

Every year, one lucky winner gets this spectacular trip. **It will be drawn at the closing banquet of the National Seminar in San Antonio, TX, in October this year!** Everyone holds their breath and crosses their fingers; it's so exciting. Don't be left out!

Tickets are **\$10**. Just \$10 for a chance at this amazing trip! Buy early and often!

**Don't forget, MAR members; this one is in OUR region!**

These tickets are numbered and only sold by your Region Director, Patty Smith Gardner. Please see the **coupon in this newsletter** for your chance to purchase a little ray of hope.

Questions? Contact Patty:

**610-664-6970 or email [pasg@comcast.net](mailto:pasg@comcast.net)**

\*Here is the breakdown of the maximum of \$2000.00 towards the cost of their trip to Seminar 2016 in Alexandria VA:



- Class registration fees (includes banquets)
- Kit fees,
- Transportation (lowest round trip airfare or mileage at \$.14 per mile not to exceed amount of lowest round trip airfare. Shuttle fees can be included)
- Per-diem of \$25.00 per day

- Hotel, up to 7 nights (at 50% of room charge including tax).

**Receipts are required for Transportation, shuttle, & hotel. Reimbursement does not include room service, tours, meals, tips, etc. The registrar is notified of the winner and will handle the registration. Receipts for airfare and hotel**

**No need to cut up your newsletter. Coupon is located in a separate e-mail attachment!**

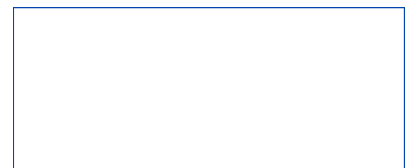
**Yes, I feel lucky! Send me my "winning" opportunity drawing tickets for the All Expense Paid Trip to National Seminar in Alexandria, VA, Nov 2016!**

Name: \_\_\_\_\_ Phone: \_\_\_\_\_

Address: \_\_\_\_\_

Email: \_\_\_\_\_ Send me \_\_\_\_\_ Drawing tickets @ \$10 each for a total of: \_\_\_\_\_

**(Make Checks payable to EGA)**







***EGA National Seminar 2016  
November 2 - 6, 2016  
Alexandria, Virginia***

**NOVEMBER 1, 2015**, is the date to mark on your calendar! That is the opening date for **Early Registration for Seminar 2016**. Photographs will be online with all registration information at the EGA website at [www.egausa.org](http://www.egausa.org).

We are very pleased to present to you the exciting classes from our staff of 31 faculty members. In our four-day classes we have 2 history, 2 surface, 5 counted, 1 ribbon, and 1 stumpwork class. Chris Berry will teach development of blackwork, Carol Currier has a crewel tree of life, Jette Roy Finlay-Heath presents Danish white work, and Nan Tyson Euler the Women of the Rose Sampler. Merrilyn Heazlewood will teach Glass House Fuchsias with ribbons, Lois Kershner has Nature to Needleart canvaswork, Dorothy Leshner encores her Dragons, Erin Harvey Moody & Christy Gordon Baty present Stitching the Trevelyon (history), Jane Nicholas will teach Dogwood and Green Lacewing, Donna Olson will teach four Hardanger doilies, and Arata Tamura has a basic Japanese Embroidery "Plum in Praise."

In the two-day class format we have 13 surface, 10 counted, 6 beading, 3 metal thread, 2 stumpwork, 2 felting, 1 color & design and 1 judging class. Kris Andrews is teaching one crewel and one Japanese-style class. Jane Ellen Balzuweit has a pulled-thread butterfly box and a count thread hanging. Eileen Bennett has two count thread samplers: Summer Day and Williamsburg Harvest Band. Kurdy Biggs has a geometric canvas box and a canvas butterfly design. Lindy Chirby will teach a crystal pendant and a beaded necklace. Gary Clarke presents a goldfish on gauze and box embellished with surface stitching. Katherine Diuguid will teach Beehive Goldwork Sampler and metalwork floral design from the Gregg Museum. Marsha Papay Gomola has a stumpwork garden and a Rabbit in My Garden Pincushion. Diane Hertzler has a Tucson Bangle (beading) and a pair of bracelets. Ruthmarie Hofmann guides us through "Improv Triptych" surface stitching and "Earthsong 2" free stitchery nature design. Catherine Jordan will teach a multi-technique Journal and "Blackberries" a box combining blackwork and Zentangle. Margaret Kinsey has a Camellia in Rozaschi and a Thistle in Gold – metal work. Renate Maile-Moskowitz presents felted flowers and 3D surface textures with felt. Canby Robertson has a blackwork folding orts box and crewel rose soft shading study. Sandy Rodgers presents an overview of color and design and a canvas shading class. Kay Stanis has a metal Floral Fantasy and surface Ribbon Dance. Carol Lynn Stratton is teaching Judging and a blackwork study class. Aimee Sweet McNamara presents soutache on shibori cuff and Soutache embroidery necklace. Deborah Tirico will teach a felted dragon applique and a felted unicorn picture.

In addition we have ten 1-day classes on Wednesday, November 2.

Please consult the EGA website for information on registering for these wonderful offerings!

**Early Registration is November 1–30, 2015**  
**Regular Registration opens March 15, 2016**

### Joan Masterson Fund

Submitted by Judy Herrick, Committee Chair

The committee received one grant application for May 2015 deadline and the grant was awarded as follows:

A grant for \$375 to the Molly Pitcher Stitches for one of the two day teaching fee for Joan Thomasson's workshop, *High Country Winter*, on July 17-18, 2015

These events will provide MAR chapters with educational opportunities for their members and members of the region.

The next deadline for applications is November 1, 2015. Go to the region website and review the guidelines of the Joan Masterson Fund. A grant can help with the teaching expenses. Please contact me if you need more information.

## Congratulations



**Cheryl Sharp,  
of the  
Washington, D.C. Chapter,  
wins  
EGA Gold Thread Award**

For over 34 years Cheryl Sharp had been an active and productive member of the Washington, D.C. Chapter. It would take pages to list all that she has done for her chapter and EGA! She has served in every chapter office (except treasurer), in some positions several times. In addition to being a chapter officer, she has organized the making of Christmas ornaments, a tree skirt, and decorations for the Hermitage retirement center where the chapter meets. Currently Cheryl collects, stores, and organizes donations to the chapter, runs a stash sale as a chapter fund raiser, and maintains the chapter library. She also continues to facilitate tours and bus trips for her chapter, such as the recent one to the Washington National Opera Costume Studio. She continues to create and teach classes to her chapter, including a "Tote bags with a Heart" project that resulted in 400 bags made for abused mothers and children living in the Fairfax County Shelter. The success of that project then led her to organize the making of 1500 tote bags for the Fairfax County Public School Reading Program. In 2005 Cheryl created her chapter's Crewel Study Group. Currently, along with Lucy Edmison, Cheryl publishes the chapter newsletter. All of this, and she continues to mentors other stitchers and teachers classes!

Besides chapter activities, Cheryl chaired the 17<sup>th</sup> annual "Through the Needle's Eye" exhibit sponsored by MAR. She has edited a crewel embroidery booklet for national EGA, and writes "Designer Across America" articles for "Needle Arts" as well as other pieces on surface stitching. Cheryl wrote the "Highland Lady" directions for Doreen Arnold's Petite Project.

Cheryl is constantly seeking new ideas and education, most recently by attending the International Embroidery Conference held in Williamsburg in 2015.

Her non-chapter activities include being the initial contact for the 1996 White House Nutcracker Christmas Tree project, stitching for the Smithsonian Museum Christmas tree, creating linens for the National Cathedral, and volunteering at Mount Vernon.

AliceRae Kutish

### MAR PRiDe Schlorship

Submitted by AliceRae Kutish

MAR PRiDe scholarships are offered each year to individuals who wish to do independent embroidery studies. Some past examples are ICCs, seminar attendance, historic and ethnic stitching studies, etc. The deadline for 2016 will be March 31. It is not too early to start thinking about what stitching opportunity you would like to apply to fund. Details and application forms will be in the Dec. 2015 MARN.

The MAR PRiDe scholarship for 2016 will be named for Pam Kopp of the Washington DC and Constellation Chapters. Pam was a gifted stitcher and a wonderful person. She served as Region Representative for the Constellation Chapter for many years.

### MAR PRiDe SILENT AUCTION

Each year MAR PRiDe offers grants to MAR members who are interested in individual study opportunities. Study areas include ICCs, class/seminar attendance, ESPs, ethnic and historic studies, etc. Fund raising to support the grants is done by the MAR Region Directors past and present.

At the Oct. 3, 2015 MAR meeting there will be a silent auction of items donated by Regional Directors. Items will be offered with a minimum starting price and a minimum raise. The auction will run throughout the day and will close at the end of the MAR meeting on Saturday evening.

If you will not be at the meeting but still would like to bid, please contact AliceRae Kutish at Kutish [3216@aol.com](mailto:3216@aol.com) or 570-288-5342. You can register your highest bid. If successful the item will be sent to you via a chapter member in attendance or USPS. If you do not want to use your own name when bidding, AliceRae will keep a list of bidding pseudonyms.

### ITEMS TO BE AUCTIONED



**Judy Jeroy** is offering a framed sample of her GCC "Crewel Choices" and a copy of the booklet.

Opening Bid of \$100.00 with \$5.00 raises.



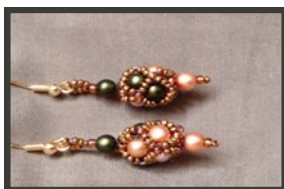
**Carol Peao Currier** stitched this adorable Sweet Bag from the "Pomegranate and Peas Purse," the 2009 SMART Day Project.

Opening Bid of \$30.00 with \$3.00 raises.



**Marie Campbell** created a trio of beaded jewelry. She named the necklace "Tierra Treasure." The color family is wisteria (sage, green and gold).

The necklace will open at \$60.00 with \$5.00 raises.



The ear rings open at \$15.00 with \$2.00 raises.



The bangle bracelet will open at \$30.00 with \$3.00 raises.

**Nan Tyson Euler** is providing 4 sampler reference books:

Embroideries and Samplers From Islamic Egypt by Marianne Ellis

Opening bid of \$20.00 with \$ 2.00 raises

Paradise Revisited by Whitney Antiques

Opening bid of \$20.00 with \$ 2.00 raises

When This You See Remember Me, British Samplers by Whitney Antiques

Opening bid of \$20.00 with \$ 2.00 raises

English Samplers from the Seventeenth Century by Curious Works Press

Opening bid of \$20.00 with \$ 2.00 raises

**Alice Rae Kutish** has agreed to bead a Seminar 2016 nametag for the lucky bidder.

The opening cost will be the value of the kit. Raises will be \$3.00.

At the time of printing there was no available picture of the nametag.

**Pat Reynolds** donated:

Catherine Jordan dyed linens with matching dyed threads

Opening bid of \$15.00 with \$2.00 raises

One yard of Zweigarts Legacy Linen-40 count in Newcastle Cream

Opening bid of \$35.00 with \$3.00 raises

One yard of Zweigarts Legacy Linen-34 count in White

Opening bid of \$35.00 with \$3.00 raises

A fat half of Belfast Linen-32 count in "Raw" (dark taupe) with 6 matching skeins of floche

Opening bid of \$20.00 with \$2.00 raises

A Diane Clements kit for her "Strawberry Lace"

Opening bid of \$60.00 with \$5.00 raises



**Patty Smith Gardner** is offering a handmade turquoise and coral silk crinkle chiffon 46 inch square scarf with beaded corners.

Opening bid of \$30.00 with \$3.00 raises



**Rosemary Kostansek** is giving a pulled thread sampler which Joan Masterson charted from the EGA's collection including the marker "top" which Joan suggested along with the instruction booklet. The piece measures 13' x 13.5"

Opening bid of \$30.00 with \$3.00 raises

Friday & Saturday, September 18 & 19, 2015  
Come join us in exploring the wide world of fiber arts at the

## Pennsylvania Fiber ArtsFest

5 Full Day Classes \* 11 Half Day Classes  
Marketplace on Saturday \* Educational Exhibits  
Demonstrations \* Children's Activities

Held in Huntingdon, PA

Nestled in the beautiful Allegheny Mountains of Central Pennsylvania

**Registration form and more info at [www.fiberartsfest.org](http://www.fiberartsfest.org)**

*Please check website for list of materials supplied and for supplies you need to bring to each class.*

### **Friday, September 18, Full Day**

9 am to noon, 1:30 pm to 4:30 pm

#### **1. Amazingly Simple Triangle Stars**

Quilting, Beginners & Intermediate Levels

*Instructor: Barbara Cline*

#### **2. Hand Snowflake Design**

Applique', All Levels

*Instructor: Karen Hill Saylor*

### **Saturday, September 19, Full Day**

9 am to noon, 1:30 pm to 4:30 pm

#### **1. Machine Quilting & Binding**

Quilting, All Levels

*Instructor: Barbara Cline*

#### **2. Beads & Braid Eye Candy**

Beading, Advanced Beginner

*Instructor: Marie Campbell*

#### **3. Embellish with Brazilian Embroidery**

Embroidery, All Levels

*Instructor: Karen Saylor*

### **Friday Morning, Half-Day**

9 am to noon

#### **1. Ply-Split Braiding**

Braiding, Beginner Level

*Instructor: Sarah Goslee*

#### **2. Basics of Knitting**

Knitting, Beginner Level

*Instructor: Shelly Shaffer*

### **Saturday Morning, Half-Day**

9 am to noon

#### **1. Fingerloop Braiding**

Braiding, All Levels

*Instructor: Sarah Goslee*

#### **2. Introduction to Needle Tatting**

Tatting, Beginner Level

*Instructor: Deb Bender*

#### **3. Knitting: Building Confidence**

Knitting, All Levels

*Instructor: Shelly Shaffer*

#### **4. Rug Hooking Sampler**

Rug Hooking, Beginner Level

*Instructor: Alice Kelsey*

### **Friday Afternoon, Half-Day**

1:30 pm to 4:30 pm

#### **1. Introduction to Bobbin Lace**

Lace, Beginner Level

*Instructor: Deb Bender*

#### **2. Card Weaving for Anyone**

Weaving, Beginner Level

*Instructor: Sarah Goslee*

#### **3. Knitting: Beyond Basics**

Knitting, Beginner Level

*Instructor: Shelly Shaffer*

### **Saturday Afternoon Half-Day**

1:30 pm to 4:30 pm

#### **1. Sticks & Strings**

Weaving, All Levels

*Instructor: Sarah Goslee*

#### **2. Lace Knitting**

Knitting, Advanced Level

*Instructor: Shelly Shaffer*



## Pennsylvania Fiber ArtsFest

### Registration

**PLEASE—Fill out and submit a separate form for each person!**  
***Pre-Registration deadline is Friday, August 15, 2015***

**Name:** \_\_\_\_\_

**Address: City, State, Zip:** \_\_\_\_\_

**Telephone:** \_\_\_\_\_

**E-Mail:** \_\_\_\_\_

***All classes seating is on first come, first served basis.***

**FRIDAY, SEPTEMBER 18, 2015 Full Day Classes:** \$60 Class Fee + Materials

\_\_\_\_\_ Amazingly Simple Triangle Stars \$60 + \$50 = \$110 \$\_\_\_\_

\_\_\_\_\_ Hand Snowflake Design \$60 + \$5 = \$65 \$\_\_\_\_

**Half Day Classes, Morning:** \$30 Class Fee + Materials

\_\_\_\_\_ Ply-Split Braiding \$30 + \$3 = \$33 \$\_\_\_\_

\_\_\_\_\_ Basics of Knitting \$30 + \$20 = \$50 \$\_\_\_\_

**Half Day Classes, Afternoon** \$30 Class Fee + Materials

\_\_\_\_\_ Introduction to Bobbin Lace \$30 + \$10 = \$40 \$\_\_\_\_

\_\_\_\_\_ Card Weaving for Anyone \$30 + \$3 = \$33 \$\_\_\_\_

\_\_\_\_\_ Knitting: Beyond the Basics \$30 + \$20 + \$50 \$\_\_\_\_

\_\_\_\_\_ Felted Bag \$30 + \$50 + \$80 \$\_\_\_\_

**SATURDAY, September 19, 2015 Full Day Classes** \$60 Class Fee + Materials

\_\_\_\_\_ Machine Quilting & Binding \$60 + \$0 = \$60 \$\_\_\_\_

\_\_\_\_\_ Beads & Braids Eye Candy \$60 + \$25 = \$85 \$\_\_\_\_

\_\_\_\_\_ Embellish with Brazilian Embroidery \$60 + \$5 = \$65 \$\_\_\_\_

**Half Day Classes, Morning** \$30 Class Fee + Materials

\_\_\_\_\_ Fingerloop Braiding \$30 + \$0 + \$30 \$\_\_\_\_

\_\_\_\_\_ Introduction to Needle Tatting \$30 + \$20 = \$50 \$\_\_\_\_

\_\_\_\_\_ Knitting: Building Confidence \$30 + \$0 = \$30 \$\_\_\_\_

\_\_\_\_\_ Rug Hook Sampler \$30 + \$12 = \$42 \$\_\_\_\_

**Half Day Classes, Afternoon** \$30 Class Fee + Materials

\_\_\_\_\_ Sticks and String \$30 + \$3 = \$33 \$\_\_\_\_

\_\_\_\_\_ Lace Knitting \$30 + \$0 = \$30 \$\_\_\_\_

Tax-deductible donation for Fiber ArtsFest \$\_\_\_\_\_

**TOTAL Payment Enclosed:** \$\_\_\_\_\_

Registrants under age 18 must be accompanied by a parent or guardian

Make checks payable to **Huntingdon County Arts Council**

And mail to: **HCAC, 212 Fourth St., Huntingdon, PA 16652**

**Confirmation will be sent via e-mail**

**No need to cut up your  
newsletter. Registration  
Form is located in a  
separate  
e-mail attachment!**

## MAR History—Request

Submitted by AliceRae Kutish, Mid-Atlantic Region Historian

I am requesting a chapter history from each of the Mid-Atlantic Region chapters. Include any special events such as when and where you were formed, trips, speakers, classes, sponsored MAR events such as seminars or meetings, possibly a list of presidents, etc.. Pictures can be included. Some other ideas are how your chapter name was chosen, any major shifts in your chapter such as location or meeting times, special outreach project you do, interest groups, etc. Please submit to me by the October MAR meeting.

Now for some MAR history—Here is a list of all of the women who have served as MAR Region Directors:

1. Barbara Benham	7. Kay Strong	13. Pat Reynolds
2. Roberta Johnson	8. Rosemary Kostansek	14. Nan Tyson Euler
3. Anne Booske	9. Joan Murry	15. Leslie Gagliardi
4. Sue Jones	10. Marie Campbell	16. AliceRae Kutish
5. Judy Jeroy	11. Ruth Ann Gates	17. Patty Smith Gardner
6. Shirley Tietjen	12. Carol Peao Dam (Carol Currier)	

### Shopping Suggestions from the Brandywine Chapter for your SMART Day Weekend

**Fireside Stitchery**—[www.firesidestitchery.com](http://www.firesidestitchery.com)

490 Lancaster Avenue, Frazer, PA 19355

**Strawberry Sampler**—[www.strawberrysampler.com](http://www.strawberrysampler.com)

364 Wilmington Pike, Glen Mills, PA 19342

**Blue Santa Bead**—[www.bluesantabeads.net](http://www.bluesantabeads.net)

1165 West Baltimore Pike, Media, PA 19063

**Quilt Block**—[www.quiltblockincfabric.com](http://www.quiltblockincfabric.com)

95 E. Welsh Pool Road, Exton, PA 19341

**Hayes Sewing Machine Company**—

[www.trevhayes.com](http://www.trevhayes.com)

4425 Concord Pike, Wilmington, DE

**Stitches with Style**—[www.stitcheswithstyle.net](http://www.stitcheswithstyle.net)

16-E Polly Drummond Shopping Center, Newark, DE



### Reminder:

**All coupons and application forms are located in a separate e-mail attachment!**



Ah, Camp Wannastitch!!!!





**Registration Coupon — SMART Day Class**  
**"Royal Crest Pin/Pendant" (Soutache & Bead Embroidery)**  
**October 3, 2015 — Wilmington, Delaware**

Name: \_\_\_\_\_ EGA Member # \_\_\_\_\_

Home Address: \_\_\_\_\_

Email Address: \_\_\_\_\_ MAR Chapter \_\_\_\_\_

Home Phone #: \_\_\_\_\_ Cell Phone #: \_\_\_\_\_

Emergency Contact: \_\_\_\_\_ Phone # \_\_\_\_\_

**Kit Fee: \$45.00—Please enclose Check Made Payable to: MAR EGA**

Mark your choice of colorway.

- \_\_\_\_\_ 1. "Tree House" - Orange/Green
- \_\_\_\_\_ 2. "Lullaby" - Blue/Lavender
- \_\_\_\_\_ 3. "Finger Paint" - Primary Colors
- \_\_\_\_\_ 4. "Sandcastle" - Warm Neutrals
- \_\_\_\_\_ 5. "Snow Angels" - Aqua/White

**REGISTRATION DEADLINE: August 15, 2015**

**NO need to cut up your newsletter! All coupons located in a separate e-mail attachment!**

## Camp Wannastitch Registration



Name \_\_\_\_\_

Chapter \_\_\_\_\_

E-Mail \_\_\_\_\_ Phone \_\_\_\_\_

Emergency Contact \_\_\_\_\_

**Registration is \$10—Please make check  
payable to MAR EGA.  
Deadline for registration is December 15, 2015**





**MARN Editor**

All EGA chapters are granted permission to reprint original material in this newsletter with proper credit and the Mid-Atlantic Region Newsletter. Any copyrighted material will be indicted. Written permission to reprint copyrighted material must be obtained from and granted by the author or artist.

“Our mission is to stimulate appreciation for and celebrate the heritage of embroidery by advancing the highest standards of excellence in its practice through education, exhibition, preservation, collection and research”

Please feel free to use this statement wherever you feel is appropriate, especially in your chapter newsletters



#### ***About MARN***

Marn (Mid-Atlantic Region Newsletter) is now published three times a year (April, August and December).

Subscriptions for mailed copies for one year are only **\$6**. The address label on a paid subscriber's copy carries the expiration date. If you would like to receive the MARN, send your check to:

**Theresa Underwood  
P.O. Box 733  
Buchanan, VA 24066**

Please make your check payable to **MAR-EGA**. Theresa will inform the editor of your subscription or renewal.

#### **Submitting Newsletter information**

Information can be submitted for the newsletter in two ways. You may E-mail the MARN editor or send it by mail. Her information is listed in this newsletter. Please include your name, chapter and phone number.

Unless otherwise stated, the deadline for article submission is one month before publication. The exact date will be announced.

#### **Online MARN**

This issue of the MARN is available in full color for FREE on the MAR website. The newsletter is on a password-protected members-only page. If you would like access to the page, use the username and password listed above. Email the web coordinator if you cannot access the members only area. (You do not need to be a member of the Mid-Atlantic Region to access the online **MARN**.) There is also a scrubbed version (with no personal information) available without a password on the same site. [www.marega.org](http://www.marega.org)